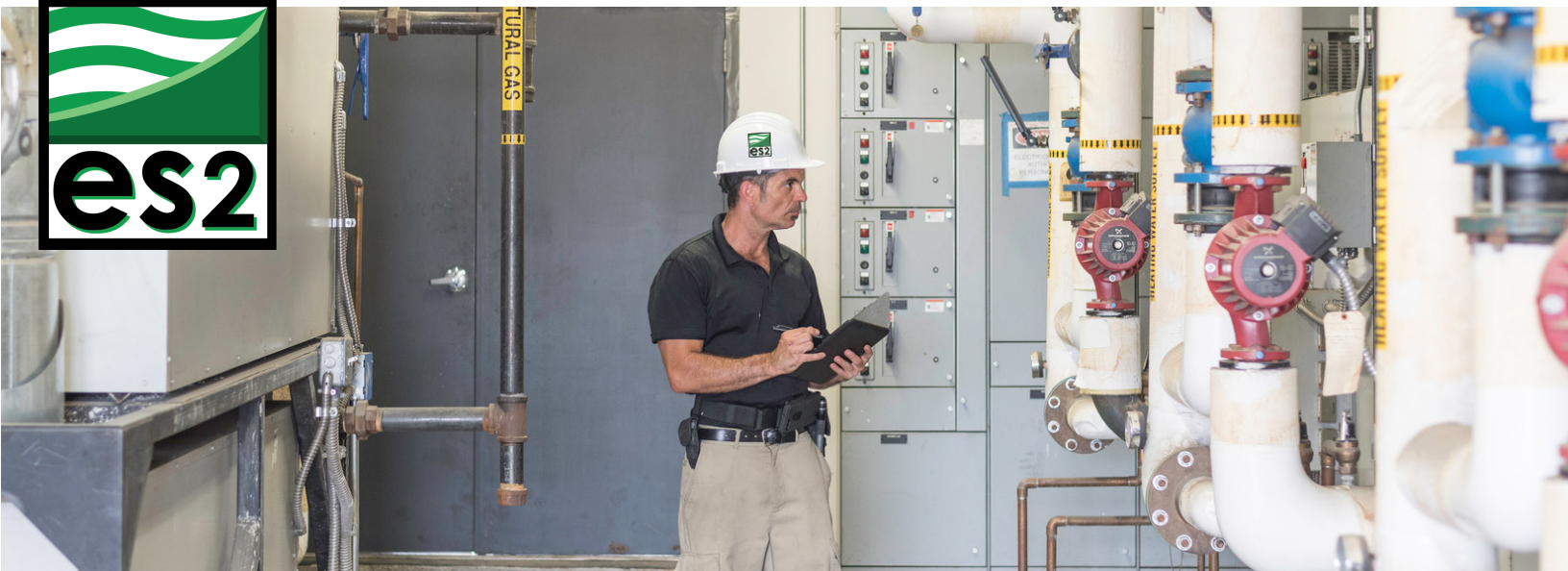


BUILDING COMMISSIONING

DISCOVER PROBLEMS EARLY AND IMPROVING YOUR BUILDINGS EFFICIENCY



ASHRAE defines Building Commissioning as “A quality-oriented process for achieving, verifying, and documenting that the performance of facilities, systems, and assemblies meets defined objectives and criteria.” The commissioning process helps to ensure that the owners project specifications are being met and that building components are working correctly.

OUR SERVICES

- Building Envelope Testing
- Building System Commissioning
- Whole Building Technical Commissioning
and Sound and Vibration
- Design Phase Commissioning
- Enhanced Commissioning
- Fire Alarm Testing
- Indoor Air Quality Testing
- LEED Technical Commissioning
- NFPA Above Ceiling Inspection
- Retro-commissioning

WHY COMMISSION YOUR BUILDING?

Hiring a Commissioning agent for your new build project can ensure the construction process go is streamlined, can reduce the number of change orders needed, and reduce the cost of operations and energy cost. If you want an older building that was not commissioned during the construction process, then retro-commissioning is your answer. Retro-commissioning will provide a systemic evaluation of your building to see where improvements can be made to the building's efficiency.

WHY CHOOSE ES2?

Having highly skilled and experienced agents, our team members perform Technical Commissioning versus Process Commissioning. With Process Commissioning, all a building owner receives is someone reviewing commissioning forms completed by contractors. Our team performs Technical Commissioning, which means that our commissioning agents are on site, inspecting the building to observe and review the installation of equipment, helping to facilitate communication between trades, which leads to closing a project faster and making sure a quality job is performed. Our company has a collection of knowledgeable employees who are experts in Building Automation, Test Adjust and Balance, and Engineering.